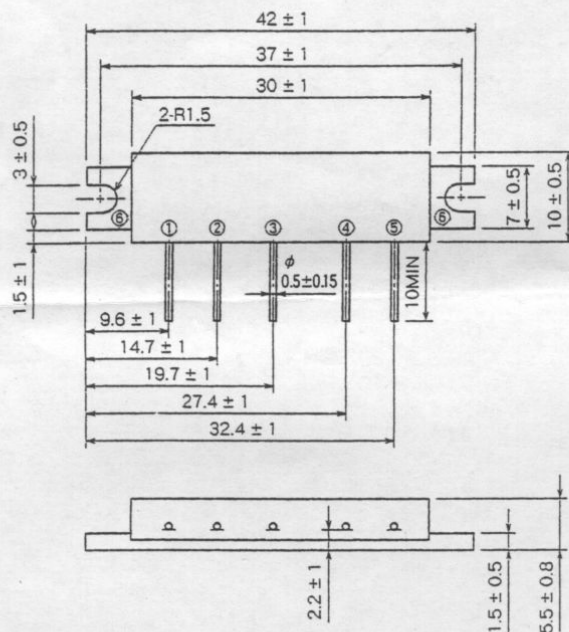


SC-1197

1240-1300MHz, 7.2V, 1.4W, FM PORTABLE RADIO

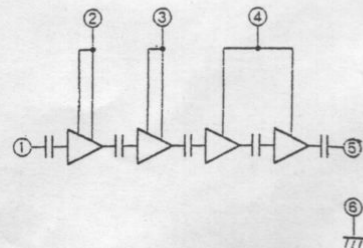
OUTLINE DRAWING

Dimensions in mm



H27

BLOCK DIAGRAM



PIN :

- ①Pin : RF INPUT
- ②VCC1 : 1st. DC SUPPLY
- ③VCC2 : 2nd. DC SUPPLY
- ④VCC3 : 3rd. DC SUPPLY
- ⑤Po : RF OUTPUT
- ⑥GND : FIN

ABSOLUTE MAXIMUM RATINGS (Tc = 25°C unless otherwise noted)

Symbol	Parameter	Conditions	Ratings	Unit
Vcc1, 2	Supply voltage		7.5	V
Vcc3		Vcc1, 2 ≤ 7.2V	15	V
Icc	Total current		2.5	A
P _{in(max)}	Input power	Vcc1, 2 ≤ 7.2V, Z _G = Z _L = 50 Ω	10	mW
P _{O(max)}	Output power	Vcc1, 2 ≤ 7.2V, Z _G = Z _L = 50 Ω	2.5	W
T _{C(OP)}	Operation case temperature		- 20 to 100	°C
T _{stg}	Storage temperature		- 40 to 110	°C

Note. Above parameters are guaranteed independently.

ELECTRICAL CHARACTERISTICS (Tc = 25°C unless otherwise noted)

Symbol	Parameter	Test conditions	Limits		Unit
			Min	Max	
f	Frequency range	Vcc1 = Vcc2 = Vcc3 = 7.2V P _{in} = 7mW Z _G = Z _L = 50 Ω	1240	1300	MHz
P _O	Output power		1.4		W
η _T	Total efficiency		20		%
2f _o	2nd. harmonic			- 28	dBc
ρ _{in}	Input VSWR			3.5	-
	Load VSWR, tolerance	Vcc1 = 7.2V, Vcc3 = 15V, P _{in} = 7mW P _O = 1.4W (Vcc2: controlled) Z _G = 50 Ω Load VSWR = 10:1 (All phase). 2sec.	No degradation or destroy		-

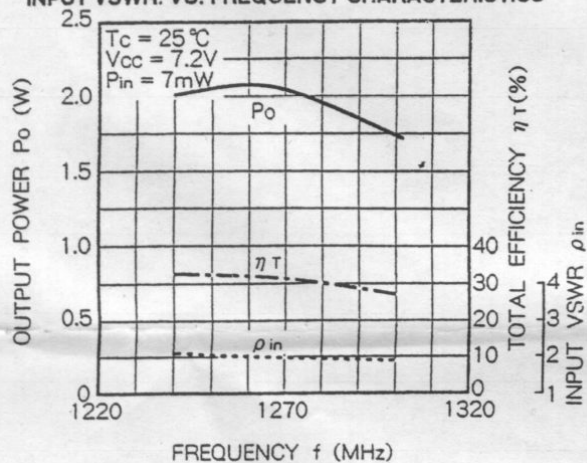
Note. Above parameters, ratings, limits and conditions are subject to change.

SC-1197

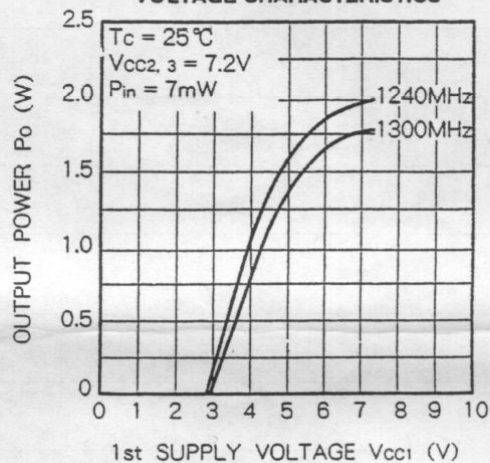
1240-1300MHz, 7.2V, 1.4W, FM PORTABLE RADIO

PERFORMANCE DATA

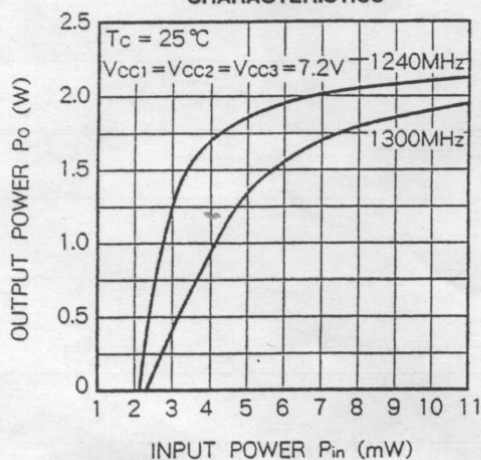
OUTPUT POWER, TOTAL EFFICIENCY,
INPUT VSWR. VS. FREQUENCY CHARACTERISTICS



OUTPUT POWER VS. 1st SUPPLY
VOLTAGE CHARACTERISTICS



OUTPUT POWER VS. INPUT POWER
CHARACTERISTICS



OUTPUT POWER VS. SUPPLY
VOLTAGE CHARACTERISTICS

